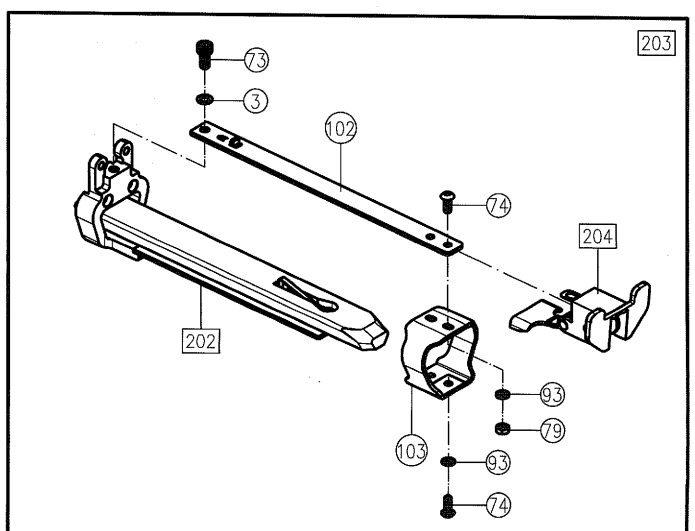
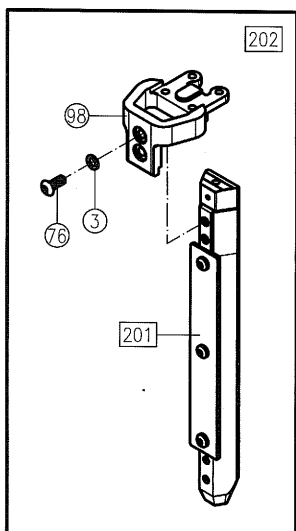
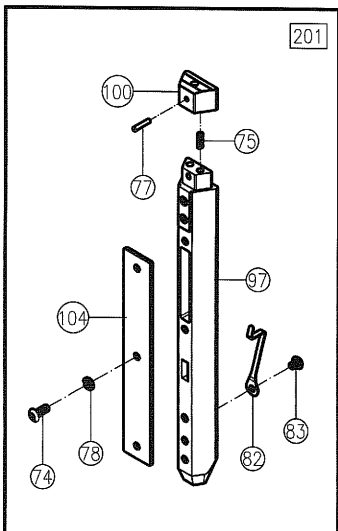
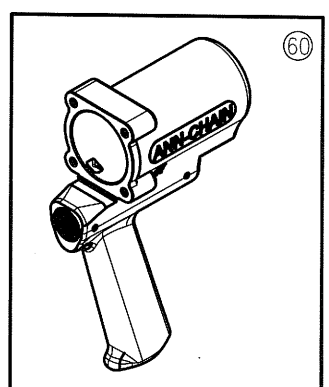
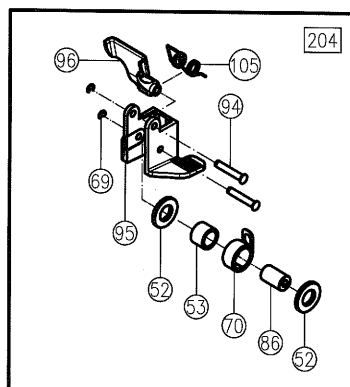
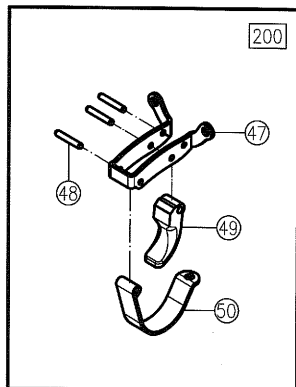
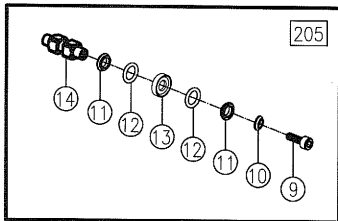
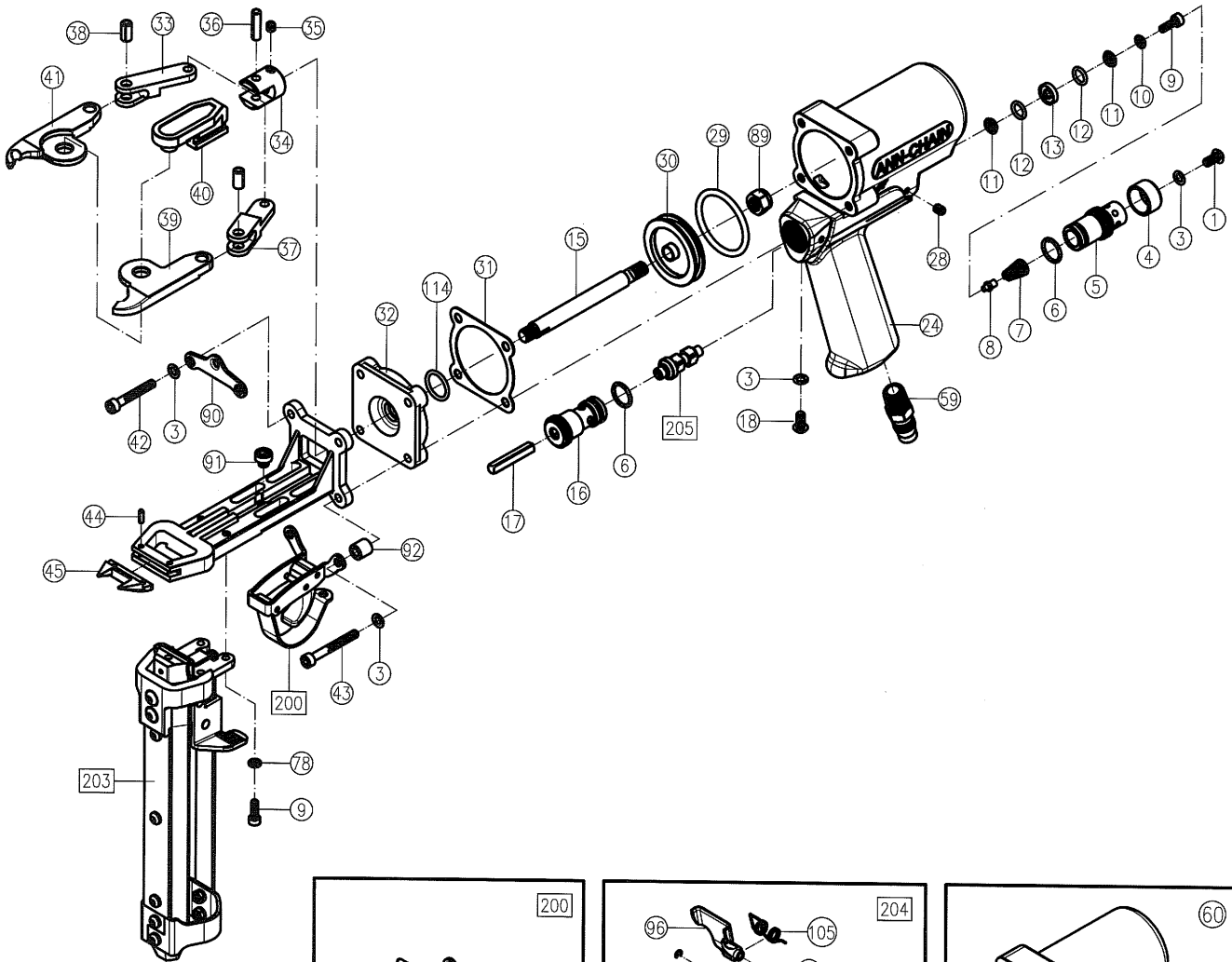


AD42M & AD43M



PARTS LIST

ITEM	DESCRIPTION	TOOL NO.	PART NO.	Q'TY	ITEM	DESCRIPTION	TOOL NO.	PART NO.	Q'TY
1	Set Screw		AD01001	1	59	Inlet Bushing		AD01059	1
3	Shakeproof lock Washer		AD01003	6	60	Housing With Rubber Grip		AD41060	1
4	Air Deflector		AD01004	1	70	Pusher Spring		AC01M070	1
5	Rear Valve Seat		AD01005	1	73	Cap Screw		AD41073	1
6	O-Ring		AD01006	2	74	Screw		AD41074	5
7	Throttle Spring		AD01007	1	75	Spring		AD41075	2
8	Throttle Spring Locator		AD01008	1	76	Screw		AD41076	2
9	Throttle Valve Screw		AD01009	3	77	Pin		AD41077	1
10	Valve Screw Washer		AD01010	2	78	Washer		AD41078	2
11	O-Ring Support		AD01011	4	79	Nut		AD41079	4
12	O-Ring		AD01012	4	82	Clip Anti-Backup		AC02082	1
13	O-Ring Center Support		AD01013	2	83	Screw		AC02083	1
14	Throttle Valve Spacer		AD01014	1	86	Spring Roll		AC01M097	1
15	Piston rod		AD41015	1	89	Flexloc Nut		AC01089	1
16	Front Valve Seat		AD01016	1	90	Hanger		AD41090	1
17	Throttle Stem		AD01017	1	91	Cap Screw		AD41091	1
18	Button Head Cap Screw		AD01018	1	92	Pad Roll		AD41092	2
28	Set Screw		AD01028	1	93	Washer		AD41093	2
29	O-Ring		AC41029	1	94	Pusher Pin		AC01M094	2
30	Piston		AC41030	1	95	Pusher Set		AD41M095	1
31	Cylinder Gasket		AC41031	1	96	Pusher		AD41M096	1
32	Piston Stop Spacer		AD41032	1	97	Magazine (Short)	AD42M	AD41M097	1
33	Right Arm Link		AD41033	1		Magazine (Long)	AD43M	AD43M097	
34	Clevis		AD01034	1	98	Magazine Set		AD41M098	1
35	Set Screw		AD01035	1	100	Magazine Shoe		AD41M100	1
36	Roll Pin		AD01036	1	102	Feeder Guid Rail (Short)	AD42M	AD41M102	1
37	Left Arm Link		AD01037	1		Feeder Guid Rail (Long)	AD43M	AD43M102	
38	Roll Pin		AD01038	2	103	Feeder Arm		AD41M103	1
39	Left Jaw		AD41039	1	104	Guard (Short)	AD42M	AD41M104	1
40	Slide		AD41040	1		Guard (Long)	AD43M	AD43M104	
41	Right Jaw		AD41041	1	105	Pusher Spring		AD41M105	1
42	Cap Screw		AD41042	2	114	O-Ring		AD41114	1
43	Cap Screw		AD41043	2	200	Trigger Guard Bracket Assy.		AD41200	1
44	Roll Pin		AD01044	2	201	Magazine Assy. (Short)	AD42M	AD41M201	1
45	Teeth (Straight)		AD41045	1		Magazine Assy. (Long)	AD43M	AD43M201	
47	Trigger Guard Bracket		AD41047	1	202	Magazine Assy. (Short)	AD42M	AD41M202	1
48	Roll Pin		AD01048	3		Magazine Assy. (Long)	AD43M	AD43M202	
49	Trigger		AD01049	1	203	Magazine with Pusher Assy. (Short)	AD42M	AD41M203	1
50	Trigger Guard		AD01050	1		Magazine with Pusher Assy. (Long)	AD43M	AD43M203	
52	Plastic Washer		AC01M052	2	204	Pusher Assy.		AD41M204	1
53	Plastic Roller		AC01M053	1	205	Throttle Valve Spacer Assy.		AC01208	1

RECOMMENDED SPARE PARTS LIST

ITEM	DESCRIPTION	PART NUMBER	Q'TY
29	O-Ring	AC41029	1
39	Left Jaw	AD41039	1
41	Right Jaw	AD41041	1
45	Teeth (Straight)	AD41045	1
204	Pusher Assy.	AD41M204	1

PERIODIC MAINTENANCE

1. Keeping clean of the tools

Do not set tools at the place where will get damage easily. Please keep from dust and humidification. Putting the tool in proper temperature is very important when the tool does not be used for a long time.

2. Cleaning the obstacle inside of tool

After using tools, please clean any obstacle blocking in JAWS (#39, #41). Keeping the tools clean is better.

3. Putting down tools lightly

After work, please put tools down lightly to avoid damaging the body and the magazine of tool.

4. Lubrication

To insure long, trouble-free service, we recommend air line lubricators and Filter Units for proper lubrication and clean, dry air. A good grade of oil that emulsifies in water is recommended for air tools.

5. Manual oiling

Although the jaws and other moving parts of the tool do need to be oiled, periodic oiling in small amounts may increase the serviceable life of the tool that receives heavy use. On a daily basis, place 4 -5 drops of light non-detergent oil into the inlet fitting where the supply line connects on the bottom of the handle.

WARNING

- ◆ Always read tool manual before operating.
- ◆ Do not point the tool at anyone. Keep hands and clothing away from the front of Jaws of the tool and away from all moving parts. Injury may result. Failure to follow these precautions may result in serious injury.
- ◆ Never actuate tool when loading, accidental injury may occur.
- ◆ Keep others at a safe distance from the tool while the tool is in operation as actuation occurs, possibly causing injury.
- ◆ Always wear safety glasses while operating or while in the vicinity of a tool in operation.
- ◆ Operate tool in an unobstructed work area.
- ◆ Air pressure should be maintained at 90 - 110 PSI (6 - 7 bars) using 1/4" (6.35mm) ID air hose. Higher pressures will not increase the operating speed of the tool and may cause damage to it.
- ◆ Do not use bottled gases such as oxygen, hydrogen, carbon dioxide or other combustible gasses.
- ◆ Disconnect air supply prior to maintenance or repair of tool.