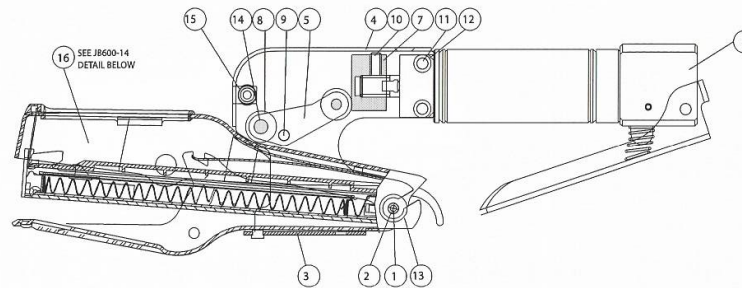


JB600

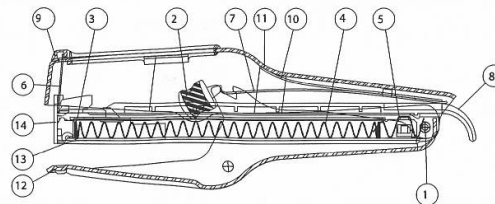
PNEUMATIC STAPLING PLIER
PINZA ENGRAPADORA NEUMÁTICA
AGRAFEUSE À PINCE PNEUMATIQUE

JB600



NO.	DESCRIPTION	REPLACEMENT PART NUMBER	Qty
1	PIVOT PIN	JB600-10	1
2	E-RING	85018	4
3	MOUNT BRACKET ASSY INCLUDES: MOUNT FRAME AND RIVET	JB600-1	1
4	COVER ASSY INCLUDES: COVER AND COVER ANCHOR	JB600-2	1
5	OPER LEVER ASSY INCLUDES: LEFT & RIGHT LEVERS, ROLL PIVOT PIN, AND CAM ROLLER	JB600-7	1
6	CYLINDER ASSEMBLY INCLUDES: WARNING LABEL (159912)	JB600-11	1
7	DRIVER BLOCK	JB600-4	1
8	CAM ROLLER	JB600-8	3
9	LEVER PIVOT PIN	JB600-13	1
10	SET SCREW	JB600-17	1
11	RETAINING SCREW	JB600-19	2
12	HEX NUTS	JB600-18	2
13	MACHINE PIN BUSHING	JB600-5	2
14	ROLLER PIN	JB600-12	1
15	FLAT HEAD SCREW COVER	JB600-16	2
16	P6-8 MODIFIED INCLUDES: LOADING LABEL (103339)	JB600-14	1

JB600-14 DETAIL



NO.	DESCRIPTION	REPLACEMENT PART NUMBER	Qty
1	REAR PIVOT PIN, JB600	JB600-10	1
2	DRIVE BEARING, P6	100406	2
3	PUSHER	100399	1
4	SPRING, COMPRESSION	P627	1
5	RETAINER, P6	100400	1
6	DRIVER, 5019	100402	1
7	CLINCHER ARM SPRING	100404	1
8	MAGAZINE COVER, P6	100407	1
9	LOADING GUIDE, P6	100409	1
10	MAGAZINE SPRING	100405	1
11	DRIVER ARM, P6-BLACK	100392	1
12	CLINCHER ARM	100393	1
13	CORE - 5019	100538	1
14	MAGAZINE - 5019	100537	1

IP1254REVA 01/07
 TO BE USED WITH OPERATION AND MAINTENANCE MANUAL 175619.